



# Northwest Pump

PETROLEUM & INDUSTRIAL

# Petroleum

DIVISION

Industry Leader in the West SINCE 1959



800.452.PUMP | [www.nwpump.com](http://www.nwpump.com)

# Retail

## DISPENSERS

### Retail Fuel Dispensers

**Gilbarco Veeder-Root** retail fuel dispensers deliver proven reliability and profitability. Gilbarco's automated fuel dispensers are designed for upgradeability to maximize long-term investment.

- EMV readiness
- Reliability
- Flexibility
- Marketing capability
- Security



Encore 700S



### Retail Ultra Hi-Flow Dispensers

**Gilbarco** Encore ultra hi-flow masters and satellites for retail truck stops are made to last and reduce the amount of time it takes to pump and pay. Sell more fuel during busy periods at your diesel fuel pumps and get customers back on the road faster.



### Retail Diesel Exhaust Fluid Dispensers

**Gilbarco** Encore S range of diesel exhaust fluid dispensers offers a host of features and benefits including maximum uptime, extremely low cost of ownership, easy installation and upgradeability, and a simple and intuitive user interface.

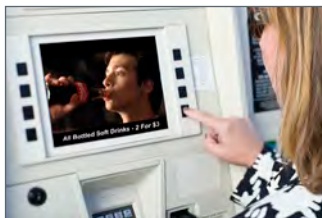
### Retail CNG Dispensers

**Gilbarco** Encore CNG dispenser makes it easy to bring compressed natural gas to the forecourt. Integration into existing POS plus the familiar Encore user interface increases throughput and enhances the customers experience.



### FlexPay™ Flexible Payment System

**Gilbarco** FlexPay™ IV CRIND helps secure gas pumps from theft and fraud. FlexPay™ Encrypting PIN Pad (EPP) and FlexPay™ Hybrid Card Reader (HCR) offer Payment Card Industry (PCI) compliance at the forecourt. Retrofit kits for a variety of dispensers.



### Dispenser Merchandising

**Gilbarco** Applause TV with VNET® is media at the pump. It entertains and engages customers in the forecourt – driving them into the store for high margin items.



### Basic Retail Dispensers

**Gilbarco** Titan mechanical dispensers are the right choice for basic fueling. Durable construction, higher flow rates, and low cost of ownership. A wide range of models to meet all your basic fueling needs.



# Retail

## POS

### POS Systems

Optimizing customer experience and business operations.

**Gilbarco Veeder-Root** Passport® offers the tools to present the right products to the right customers in precisely the right way with a more versatile loyalty system, smarter marketing options, a sleek all-in-one design, tighter security and much more. It has the power to optimize every transaction, provide exceptional customer service and manage for the future. Seamless integration with dispensers and tank monitoring systems for gas stations and C-stores.

- All-in-one convenience
- PCI compliance
- Ease to use
- Accurate Reporting
- Promotion Capabilities
- Superior loyalty and rewards
- Remote access and support



### POS PIN Pads

Consumer-facing devices which are rugged and reliable for service station and C-store transactions.

Multiple payment solution options: NFC contactless mobile payment enabled, EMV chip and PIN compatibility.

Enhance customer interaction with value-added optional full-motion video display to capture consumer attention.

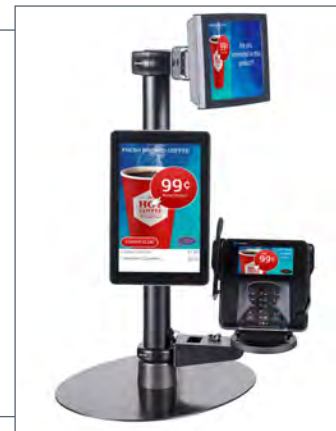
Slim, space-saving model options with high-speed processors and generous memory.



### Countertop Merchandising / Upselling

**Gilbarco** Impulse™ enhances the Passport POS to upsell intelligently, driving promos, increasing sales, and improving profitability.

Impulse makes personal recommendations based on items scanned, displaying suggested products to the customer on the touch screen. Additionally, it prompts the cashier with the same information and gives another upsell opportunity.



### POS Peripherals

A complete line of POS peripherals with quality, reliability, and compatibility.

Scanners, printers, customer displays, cash drawers, report printers, and RFID readers which are durable, easy to use, and create a smooth transaction for service station and C-store customers and staff.



# Retail

## C-STORE



### Coolers, Freezers, and Doors

Walk-in and reach-in coolers and freezers for any C-store cold storage application. Highly efficient construction and components. Flexible, modular designs to maximize operational efficiency. Doors for new projects or energy upgrade retrofits. LED lighting.

Brands: **Crown Tonka, Anthony**

### Self-Contained Equipment

High performance cooling / freezing appliances. Customer-tempting refrigerated / non-refrigerated showcases. Superior climate controlled hot / cold fresh food cases. Indoor and outdoor applications. Highest efficiency standards for construction and assembly.

Brands: **True, Bev-Air, Federal, Leer, Spartan**



### Fast Food Equipment

Ice & beverage fountain dispensers, coffee making & dispensing equipment, hot dog warmers, hot food cabinets & merchandisers, and commercial microwaves.

Brands: **Servend, Manitowoc, Bunn, Grindmaster, Star, Hatco, Amana**

### Cabinets, Counters, and Shelving

Durable, attractive cabinets built to each store's specs. Wood, metal, and hybrid material options. Counter tops: laminate, stainless steel, and solid surface.

Versatile, adjustable gondola shelving which showcase products and draw customers through the store. A multitude of components and configurations available.

Brands: **Royster, Lozier, MI Industries**



### Back Room Equipment

Convenient, all-in-one ice machines and bins. Heavy gauge stainless steel sinks and work tables in a multitude of sizes and configurations. Versatile wire storage rack systems. Food service-quality water filtration systems.

Brands: **Manitowoc, Hoshizaki, Eagle, Storetec, Everpure**

### Safes and Cash Management

**Tidel** offers a full line of secure, reliable, user-friendly solutions which protect, streamline, and automate C-store cash management. A multitude of safe models and expansion modules. Configurations for note and coin dispensers, vaults, note validators, and more.



# Commercial

## FUEL TRANSFER

### Transfer Pumps

Stationary or mobile fuel transfer pumps providing superior fuel transfer performance for farms, construction sites, mines, fleet facilities, and more.

- AC transfer pumps - 115/230V, up to 80 GPM
- DC transfer pumps - 12/24V, up to 54 GPM
- Heavy duty, high flow, high pressure options
- Meter, hose, and nozzle included models available
- 1/6 - 10.0 horsepower range
- Compatibility with a variety of fuels and fluids
- UL listed models available
- Complete fuel transfer system options

Brands: **Fill-Rite, Tuthill, Dixon, PIUSI**



### Hand Transfer Pumps

Delivering fluids quickly and easily. Compatible for dispensing a wide range of fluids. Models available with suction tube, hose, nozzle spout, and meter.

Brands: **Fill-Rite, National-Spencer, Great Plains, Blackmer**

#### Rotary Pumps

- Reversible flow options
- UL listed options
- Counter models available

#### Piston Pumps

- Padlockable models
- UL listed options

#### Lever Pumps

- Clean, easy to use
- Double-action models



### Commercial / Fleet / Cardlock Fueling

Standard-, high-, super high, and ultra high-speed commercial dispensers. Satellite dispensers for quick, two-sided fleet fueling. Cardlock fuel management systems which assure the security, accountability, and profitability for 24-hour unattended fleet fuel operations. Complete, end-to-end system solutions available.

Brands: **Gasboy, Petro Vend, FuelMaster, Bennett, Fill-Rite, Comdata**



### FuelCloud

Next-generation cloud-based fuel management system which allows users to control fuel pumps, authorize transactions, track inventory, run custom reports, and automatically complete tax forms with the mobile devices businesses already have in the field.

### Flow Meters

Rugged meters to dependably monitor fuel usage. Compatibility for all pump types and fluids. Variety of temperatures, pressures, flow rates, housing materials. Metering method options for any application.

- Mechanical and electronic digital display meters
- 3 wheel and 4 wheel registers for gallons or liters
- High flow, high pressure, high viscosity options
- Custody transfer meters
- UL listed options

Brands: **Fill-Rite, Tuthill, Sotera, LC Meter**



### Bulk Valves and Fittings

**OPW/Civacon** and **Emco Wheaton** equipment is precision-engineered to safely load, monitor and unload petroleum and petro chemical cargo tanks in road and rail applications.

- Adaptors, couplers, dust caps
- Product delivery elbows
- Internal valves: emergency, shear, and foot valves
- External wet/dry butterfly loading valves
- Vapor recovery models available
- Single / dual manifold systems



### Bulk Fuel / Farm Nozzles

Rugged, heavy-duty nozzles made for high-flow bulk fueling applications. Designed with better grip and control for ease of use in truck and bus fueling, home fuel oil delivery, as well as farm operations.

- Manual and auto shut-off options
- Variety of inlet, outlet, and spout sizes available
- Range of working pressures and flow rates
- Models available for all fuel types
- UL listed models

Brands: **OPW, Morrison Bros, EBW, Catlow**





# Commercial

## LUBE EQUIPMENT

### Lube Pumps

Pumps to handle a wide range of applications, fluid viscosities, and pressures. Stationary and portable models.

#### Powered Pumps

- Fast, smooth, and reliable flow ranging from 1:1-50:1
- Air-operated diaphragm, hydraulic-powered, and electric models

#### Manual Pumps

- Simple to use; no electricity/compressed air needed
- Lever, rotary, and hand-lever models

Brands: **Graco, Alemite, National-Spencer, Lincoln, American, Balcrank**



### Lube Accessories

Helpful parts to improve ease of use, workplace safety, and productivity.

Brands: **Graco, Alemite, Lincoln, National-Spencer, American, Balcrank**

### Lube Dispensing and Metering

Consistent, reliable, and accurate equipment for dispensing fluids in maintenance and repair facilities.

#### Electronic Preset Lube Meters

- Digital readout in pints, quarts, liters, and gallons
- Light/medium duty to standard/heavy duty models
- Rugged indoor and outdoor use options

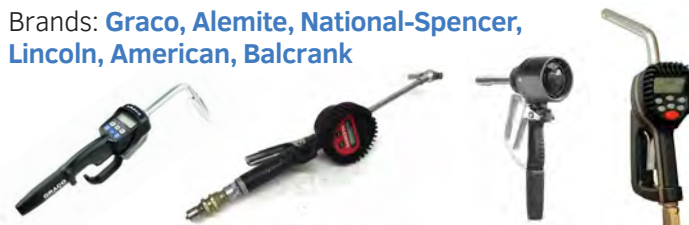
#### Non-Metered Control Valves

- Lock-on/lock-off trigger with hands-free options
- High-flow, quick-close designs for volume operations
- Rugged models available for harsh environments

#### Mechanical Meters

- Non-resettable totalizing register

Brands: **Graco, Alemite, National-Spencer, Lincoln, American, Balcrank**



### Stackable Poly Tanks

**Snyder** provides storage tanks and stands for motor oil, lubricants, hydraulic fluids, transmission fluid, and DEF.

#### Cubetainer™ Gravity Feed Systems

Complete systems including: tanks, 24" stand, gravity feed accessory package, spring valve, and drip tray kit.

#### Cubetainer™ Lube Pump Kit Options

Convenient option for dispensing directly from tank to equipment. Includes 3:1 pneumatic pump, 50' hose reel, dispensing meter, air filter regulator, and all hardware.



### Hose Reels

From bulk fluid pumping to precision dispensing, hose reels engineered for durability and safety are key components for lube shops, lube trucks, dealerships, manufacturing plants, general service shops, construction equipment and fleet service shops, transit, and more.

- Light-duty, standard-duty, heavy-duty, and severe-duty options
- High capacity and large capacity models available
- Air, water, lubrication grease, oils, DEF, and automotive fluids compatible options
- Enclosed/shielded reel models and narrow/space efficient reel models available
- Spring-rewind, motor-rewind, and hand crank options
- Speciality model reels for oxygen/acetylene welding and cutting operations
- Comprehensive assortment of hose reel accessories

Brands: **Graco, Alemite, National-Spencer, Lincoln, American, Coxreels, Hannay, Balcrank**



# Tanks

## STORAGE TANKS

### Secondary Containment Tanks

All configuration options with every tank type.

#### 1. Underground / Aboveground Tanks

Retail / fleet fueling, and commercial / industrial tanks for every application. Fire-rated and UL options. Capacities ranging from 300 up to 50,000 gallons.



#### 2. Fiberglass / Steel / Poly / Hybrid Tanks

Materials of construction options for every project compatibility requirement.



#### 3. Single / Double / Triple Wall Tanks

Containment protection levels from standard to advanced to maximum.

For all types of liquids: non-corrosive, stable, flammable, and combustible.

- Water: potable, wastewater, fire protection, conservation
- Chemicals: equipment wash-down, emergency decontamination collection
- Petroleum: vehicle fuel, jet fuel, additives, fuel oil, DEF



#### 4. Single / Multi-Compartment Tanks

Store up to three types of liquids or three grades of fuel in a single tank, providing cost savings over multiple tanks. Single and double bulkhead options and interstitial monitoring options for multi-compartment tanks.



### Manholes and Covers

Composite, cast iron, and steel construction.



### Storage Tank Accessories

Containment sumps and collars, deadmen, anchor straps.

### Fuel Oil Storage

Storage, transfer, filtration, control, and monitoring for:

- Daytanks
- Pumpsets
- Remote fill systems
- Fuel oil treatment and filtration systems
- PLC-based control systems in various protocols
- Relay-based control systems

Applications include power generation for:

- Data centers
- Hospitals
- Emergency call centers
- Back-up fuel supply for boiler systems

Brands: **Pref. Utilities, Simplex, Pryco, E & CA, Earthsafe, RCI Technologies**



### Submersible Turbine Pumps

Intelligent and efficient units with excellent flow rates, variable speeds, and minimal downtime to supply your dispensers.

Brands: **Red Jacket, FE Petro**



# Tanks

## CONTAINMENT

### Containment

Highly engineered fuel containment components for any site application. Secondary containment and underground environmental protection for all types of dispensers, pumps and meters, plumbing, emergency shear valves, fittings, and piping connections. Designed for complete system integration with underground fuel transfer piping.

- Fiberglass or polyethylene construction
- Dispenser sumps, tank sumps, transition sumps
- Accessories for all dispenser brands
- Grade level or below-grade containment options
- Wide access options
- Dispenser pans
- One/two-piece options

Brands: **OPW, Franklin Fueling Systems, Bravo**



## TANK MONITORING

### Automatic Tank Gauge Consoles

Comprehensive fuel site management systems which offer:

- Tank monitoring
- Inventory management
- Leak detection
- Environmental compliance
- Real-time control
- Remote connectivity
- Increased profitability
- Enhanced security
- Customizeable alerts
- Upgradeable software

Complete system solutions for fuel storage, piping, containment, and tank monitoring.



### Line Leak Detection

Accurate and reliable leak detection for all your products.

- Automatic electronic systems and cost-effective mechanical equipment for every compliance requirement
- Hourly, monthly, and annual monitoring capabilities
- Supporting all pump, pipe, and fuel types

Brands: **Red Jacket, FE Petro, Vaporless**



### Sensors and Gauges

Solutions to fit any containment sump, storage tank, and interstitial space liquid-free application. Wide array of configurations for monitoring tanks, lines, sumps and wells, as well as adjacent ground water. Discriminating and non-discriminating sensor options.

Brands: **Red Jacket, FE Petro, OPW**

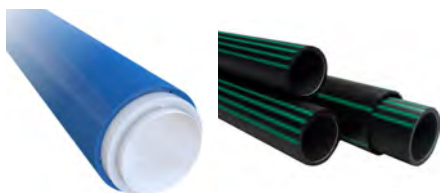


### Piping, Fittings and Couplings

Completely integrated underground fuel transfer systems. Engineered to provide the highest level of dispensing performance, installation efficiency and piping protection. Pressure or suction applications. Designed for primary and secondary containment system integration. Solutions to fit any scenario.

- Flexible piping
- Electrofusion semi-rigid piping
- Pipe ducting
- Entry boots, test boots
- Barbed
- Elbows and tees
- Couplers
- Adapters
- Flanges
- Quick release
- Clamshell
- Swivel

Brands: **OPW, Franklin Fueling Systems, NOV Fiberglass**



### Probes and Float Kits

Highly accurate tank level indicators for above ground and underground storage tanks, transmitting water height, fluid height, and temperature to a monitoring device. Inventory control and leak detection options. Water and phase separation detection options.

Brands: **Veeder-Root, INCON, OPW**



### Overfill Prevention Valves / Alarms

Provide positive shut-off during a pressurized fill delivery. Eliminate spills, overfills, costly cleanup, and ground contamination. Above ground and underground tank applications. Adjustable shut-off levels. Multi-stage shut-off valve options. Programmable, adjustable alarms.

Brands: **Veeder-Root, INCON, OPW, Morrison, EBW**





# DEF

## DEF Storage and Dispensing

Aboveground and underground DEF storage solutions for any storage volume. DEF dispensing options for retail fuel island, commercial, and fleet applications.

- Multi-tote DEF shelters:
  - custom sizes and options
- Aboveground poly tanks
- Underground fiberglass
- FMS-compatible, retail DEF dispensers
- Rugged, hi-flow fleet/commercial DEF dispensers

Brands: **Snyder, Xerxes**

Brands: **Gilbarco, Gasboy, KlearBlue, PIUSI**



## Self-Contained DEF Systems

- Minibulk fuel island DEF storage and dispensing systems
- Cube DEF tank
- Pump, hose, and nozzle included

### PORTABLE DISPENSING UNITS (PDUs)

- Steel or poly models
- Range of storage capacities
- Pump, hose, nozzle included
- Lockable, forkliftable

Brands: **Blue1 USA, Titan**

## DEF Tote Packages

Range of packages for rugged, portable DEF dispensing from 330 gallon poly totes.

- Multiple pump models available: AC / DC electric, air-driven diaphragm, rotary vane
- Stainless steel or poly nozzle
- Stainless steel or poly coupler
- Optional flow meter
- Stackable and steel frame options



## DEF Drum Packages

Range of packages for convenient, economical, mobile DEF dispensing from 55 gallon poly drums.

- Multiple pump models available: hand-powered, AC / DC electric, rechargeable battery
- Stainless steel or poly nozzle
- Stainless steel or poly coupler
- Optional heavy-duty drum truck
- Optional flow meter

## DEF Pumps

- AC / DC electric pumps
- Centrifugal pumps
- Air-driven diaphragm pumps
- Rotary vane pumps
- Hand pumps: piston, rotary



## DEF Nozzles and Meters

- Stainless steel nozzles
- Poly nozzles
- Nutating disc flow meters
- Turbine flow meters



## DEF Accessories

- Stainless steel and poly options
- Dispense and fill couplers
- Container and fill valves
- Downtubes and suction tubes
- Adaptors, caps, seals, reels, more



## DEF Transfer Skids and Carts

Northwest Pump offers custom-built DEF transfer packages, designed to the specifications of portable / mobile transfer applications. Custom options available.

- Skid-mounted: 2hp centrifugal pump, flow meter, filter assembly, hose reel
- Handcart-mounted: 2hp centrifugal pump, flow meter, 20 foot suction hose, 20 foot dispensing hose, power cord



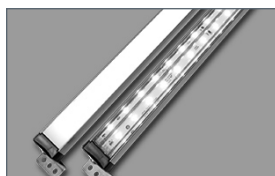
# Lighting

## Canopy and Garage Lighting

Providing high-performance lighting for exterior canopy applications, building soffits, parking garage structures, and a multitude of downlighting environments. Retrofit or new construction options.

- Available in a wide range of wattage, lumen output, efficacy, and optic configurations to meet any application specs
- Recessed, surface-mount, and pendant-mount models available
- Comprehensive exterior downlighting models and solutions

Brands: **Cree**, **LSI**, **MaxLite**, **VM5**



## Cooler Door Lighting

**ElectraLED** Solar Eclipse™ is an energy efficient, easily controllable solution. Low glare and high performance, delivering crisp, uniform light across product shelving. Replaces conventional T8 and T12 systems in vertical cooler/freezer applications. Ultra low profile design for easy installation and retrofit.

## Area and Flood Lighting

Ideal for illuminating open-space areas including automotive dealerships, exterior retail applications, parking lots, and other high-lumen area and flood lighting environments. Retrofit or new construction options.

- Available in a wide range of wattage, lumen output, efficacy, and optic configurations to meet any application specs.
- Pole-mount, wall-mount, and bracket-mount models available
- Comprehensive exterior area and flood lighting models and solutions

Brands: **Cree**, **LSI**, **MaxLite**, **VM5**



## Interior Lighting

Creating more personalized lighting for commercial architectural applications, models are available in a variety of color temperatures, lighting styles, and dimmable features. Retrofit or new construction options.

- Available in a range of wattage, lumen output, efficacy, and optic configurations to meet any application specs.
- Troffer, surface-mount, recessed can models, more
- Comprehensive interior lighting models and solutions

Brands: **Cree**, **LSI**, **MaxLite**, **VM5**



## LED Lighting Technology

Northwest Pump offers comprehensive lines of state-of-the-art LED lighting fixtures which deliver beautiful color consistency and outperform old-style lights while using a fraction of the energy.



# Hardware

## Dispenser Filters and Adaptors

Filters for various filtration applications: particulate removal, water removal, phase separation detection. Micron range of 2µm-30µm.



## Retail Fuel Nozzles

Rugged retail fuel nozzles for reliable, safe operation in a variety of dispensing applications. Pressure-sensitive and automatic shut-off models. Conventional, balance, and vacuum assist options. Suitable for all fuel products: gasoline, diesel, ethanol, biodiesel, DEF, CNG, and more. Full array of accessories: splash guards, hand insulators, and colors. We offer the industry's finest brands of nozzles.

## Fuel Hoses

High quality dispenser hoses featuring robust materials and fittings built to stand up to the harshest conditions. All lengths and fitting sizes, including whip hoses. Conventional, balance, and vacuum assist options. Suitable for all fuel products and applications: gasoline, diesel, ethanol, biodiesel, and more. The finest brands.



## Swivels

Conventional and vapor-recovery in-line hose swivels and for virtually any hanging hardware requirement. Swivel products include multi-plane, single plane, swivel breakaways, single-use and reconnectable breakaways and swivels and breakaways specially designed for use with alternative fuels.

## Breakaways

Conventional and vapor-recovery in-line fuel dispensing breakaways for all equipment sizes, types, and applications. Breakaway products include reconnectable, single-use non-reconnectable, high volume, and more.



## Conventional, Balance, And Vacuum Assist Systems

Complete hanging hardware parts for every conventional and vapor recovery fuel dispensing system and all applications:

- Commercial, fleet, and farm dispensing
- Retail gasoline and diesel dispensing
- Alternative fuels dispensing

## Sales, Service, and Installation

Northwest Pump carries the finest brands of equipment to furnish a premium C-store and also offers comprehensive services after the sale.



# Petroleum Equipment Lines

## Service Station Pumps

Gilbarco Veeder-Root  
Gasboy Red Jacket  
FE Petro

## Nozzles & Hardware

OPW Husky  
Healy Emco Wheaton  
EBW VST  
FLEX-ING Catlow

## Tank Monitoring & Gauges

Veeder-Root INCON  
OMNTEC Pneumercator  
Morrison

## Point-Of-Sale

Gilbarco Veeder-Root  
Passport VeriFone  
Topaz

## Submersible Pumps & Leak Detection

Red Jacket FE Petro  
Vaporless

## Hoses

Goodyear ContiTech  
VST Healy  
FLEX-ING

## Tank, Pipe & Containment

Xerxes Modern  
Snyder Fireguard  
OPW NOV Fiberglass  
APT Bravo  
Convault Regal  
Greer Lube Cube

## DEF Equipment

Titan Gasboy  
Benecor Micromatic  
Blue DEF KleerBlue  
Blue1 USA PIUSI

## Service Station Equipment

Healy Vapor Recovery System  
3-M Intercoms  
Amflo Bravo  
Pomeco United Sign  
PMP Tidel Safes

## Commercial Pumps

Gasboy Bennett

## Meters

Liquid Controls Tuthill  
Fill-Rite Sotera  
Total Control Systems  
Great Plains

## Valves & Fittings

OPW EBW  
Titeflex Morrison  
Clay & Bailey Jomar  
Universal Phil-Tite  
OCV Unisource  
PT Coupling FLEX-ING

## Hose Reels

Hannay Graco  
Duro Coxwell  
Lincoln Balcrank  
Alemite National-Spencer

## Filters

Champion Cim-Tek  
Donaldson Velcon

## CNG Dispensers

Gilbarco

## Lube Equipment

Graco Alemite  
Lincoln American  
Balcrank Samson  
National Spencer

## Miscellaneous

OPW Loading Arms Simplex  
Oil / Water Separators  
PetroSorb Spill Pads, Kits & Booms  
Rotary Lifts  
FuelCall  
RCI Technologies  
Petrographics

## Lighting

LSI  
CREE  
ElectraLED

## Card Systems

Petro Vend FuelCloud  
Gasboy FuelMaster  
Comdata

## Transfer & Hand Pumps

Fill-Rite Sotera  
Dixon Blackmer  
National Spencer

## Aircraft Fueling

OPW Aircraft Nozzles &  
Floating Suctions  
EBW Aircraft Nozzles  
Velcon Filters  
Goodyear Hose  
Coxwells Grounding Reel

## C-Store Equipment

True Bev-Air  
Federal Leer  
Spartan Anthony  
Crown Tonka ElectraLED  
Eagle Amana  
Hoshizaki Manitowoc  
Storetec Everpure  
MI Industries Royston  
Lozier Quikserv  
Bunn Corp Grindmaster  
Star Hatco  
Plymold

**PORTLAND, OR 97210**  
2800 N.W. 31st Ave.  
(503) 227-7867

**FEDERAL WAY, WA 98003**  
34210 9th Ave. South, Ste. 101  
(253) 850-7867

**W. SACRAMENTO, CA 95691**  
3600 Industrial Blvd. #10  
(916) 376-0599

**FREMONT, CA 94538**  
4433 Enterprise St.  
(510) 656-7867

**PHOENIX, AZ 85034**  
202 South 29th Street  
(602) 484-7944

**ANAHEIM, CA 92801**  
1271 N. Patt Street  
(714) 879-2001

**PASCO, WA 99301**  
925 N. California Ave.  
(509) 586-4151

**TUCSON, AZ 85713**  
1991 E. Ajo Way  
(520) 628-7867

**800.452.PUMP**  
**www.nwpump.com**



**SolvOne**  
THE SERVICE NETWORK

**VALENCIA, CA 91355**  
28908-12 N. Avenue Paine

**SAN DIEGO, CA 92111**  
7257 Ronson Rd. Suite A  
(619) 423-7867

**GLENDALE, CA 91204**  
337 Mira Loma Ave.  
(818) 409-3030

**ANCHORAGE, AK 99518**  
1041 East 70th Ave.  
(907) 277-7867

**BOISE, ID 83713**  
11677 W. President Drive  
(208) 376-0109

**FRESNO, CA 93722**  
3497 West Ashcroft  
(559) 227-7210

**SPOKANE, WA 99212**  
6015 E. Valleyway Ave.  
(509) 535-3633

**HONOLULU, HI 96819**  
841 Mapunapuna St.  
(808) 842-7867

**BILLINGS, MT 59102**  
1207 S. 32nd Street W. Ste. B  
(406) 896-6500